

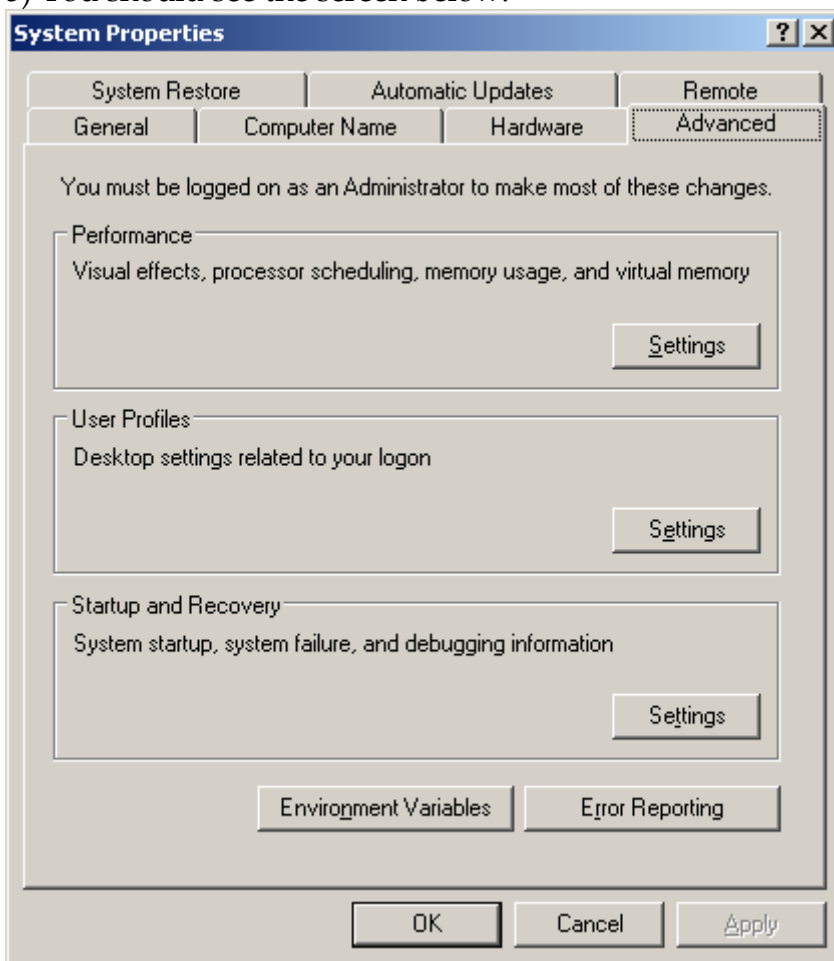
How to create a Windows Binary (with MingW) on Windows

What you need:

- 1) [Python](#) (whichever one you want to compile against)
- 2) [MingW](#) (Stable or Candidate)

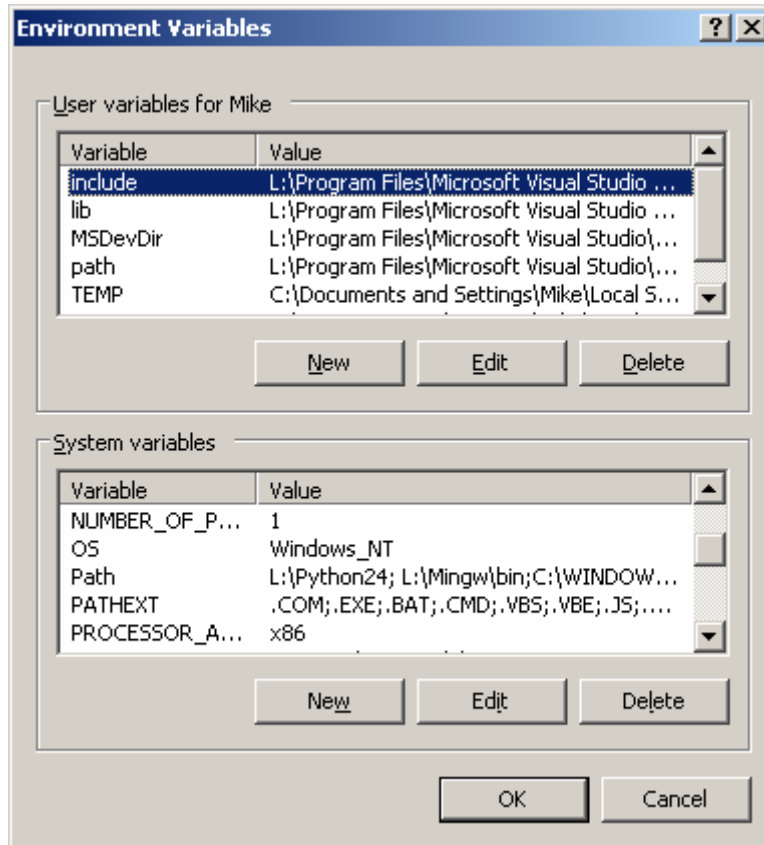
Setup Instructions:

- 1) Install Python
- 2) Install MingW using the Complete option (this may take a while as it usually downloads all the items it needs)
- 3) In Windows XP/2000 go to **Start, then Settings, and choose Control Panel**
- 4) Double-click the item named **System**
- 5) You should see the screen below:



6) Click the **Environment Variables** button

7) Look in the box labeled **System Variables** (see below) and choose the **Path** variable. Click the **Edit** button



8) Add the following values, adjusted as necessary for your installation paths:

C:\MingW\bin C:\Python24

9) Click OK to accept the new values. Then click OK twice more to close all the other dialogs.

10) Go to C:\Python24\Lib\distutils and create a file named "distutils.cfg" using a text editor, such as Notepad

11) Put the following text into the file:

```
[build]
compiler = mingw32
```

12) This forces distutils to use the MingW32 compiler to compile your extension. If you hadn't done this, it would try to compile against the compiler found in the

Python distribution's header files. In the case of Python 2.4 and 2.5, that would be Visual Studio 2003. You would receive an error telling you as much.

13) Now you're ready to compile an extension.

Let's Compile!

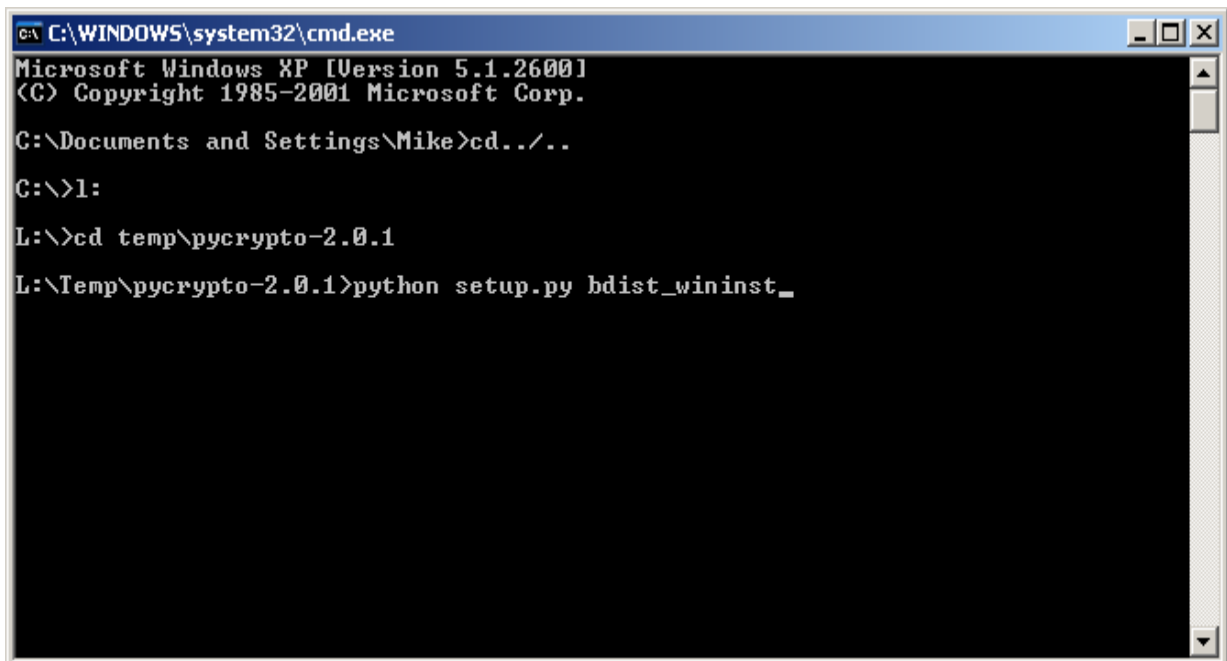
1) Download a package or module that you'd like to compile. If it's zipped, unzip it to a convenient location.

2) Open a command window by going to Start, Run and typing `cmd`

3) Change directories until you're in the one with the package you downloaded, using the `cd` command

4) Type the following: `python setup.py bdist_wininst`

5) I have an example screenshot showing how I did it with PyCrypto below. Note that I saved PyCrypto to a temp folder in my L:\ drive. You'll have to change to where ever you placed your files:



```
C:\WINDOWS\system32\cmd.exe
Microsoft Windows XP [Version 5.1.2600]
(C) Copyright 1985-2001 Microsoft Corp.

C:\Documents and Settings\Mike>cd../..
C:\>1:
L:\>cd temp\pycrypto-2.0.1
L:\Temp\pycrypto-2.0.1>python setup.py bdist_wininst_
```

That's all there is to it!